



It's all about membership

But it's also about PROJECTS



Influx of Direct Members

- RGBI social media campaign coming to our district
- Timing to be confirmed
- We are learning from problems in districts who have already had the campaign.



Influx of Direct Members

- RGBI social media campaign coming to our district
- Timing to be confirmed
- We are learning from problems in districts who have already had the campaign.
 - Process (Tony Scaife)
 - Membership ambassadors (Caroline Murie)
 - Then we need projects.....



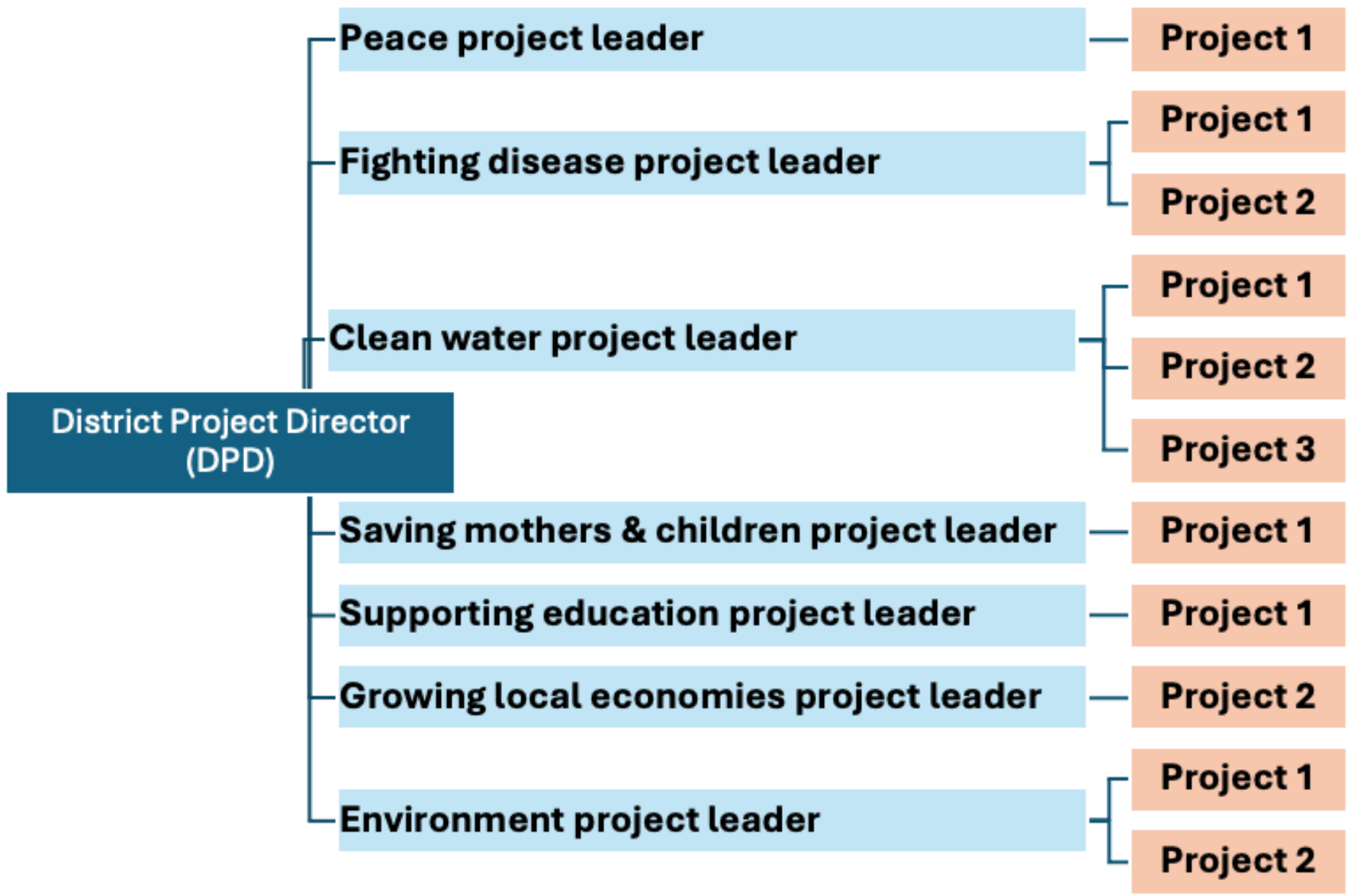
Direct Members

- They want to do projects
- Not necessarily interested nor able to attend club meetings
- We need to get them engaged quickly



Direct Members

- They want to do projects
- Not necessarily interested nor able to attend club meetings
- We need to get them engaged quickly
- **We are therefore setting up a central Districts project team**





- Project leaders don't need to do the projects, just provide “recipe cards” on how to do them.
- Lists of projects will be built up on the Knowledge web site
- Project leaders will direct people to the right place
- I'll prepare a short manual on general project management and local fundraising ideas.



- Project leaders don't need to do the projects, just provide “recipe cards” on how to do them.
- Lists of projects will be built up on the Knowledge web site
- Project leaders will direct people to the right place
- I'll prepare a short manual on general project management and local fundraising ideas.
- **Will also be good for Rotarian retention**



- Project leaders / managers don't need to do the projects, just provide "recipe cards" on how to do them.
- Lists of projects will be built up on the Knowledge web site
- Project leaders will direct people to the right place
- I'll prepare a short manual on general project management and local fundraising ideas.
- Will also be good for Rotarian retention
- **The whole district project idea will only work if volunteers come forward to be project managers. The more there are, the more we can distribute the workload.**